



Shahid
Beheshti
University



OVERVIEW PRESENTATION OF SHAHID BEHESHTI UNIVERSITY (SBU) INTERNATIONAL SCIENTIFIC RELATIONS OFFICE ACTIVITIES WITH REGARD TO SWITZERLAND

Dr. A.S. Shirani

Dr. Kaveh Bazargan

Shahid Beheshti University

<http://en.sbu.ac.ir>

int-re@sbu.ac.ir

I.R. IRAN – SWITZERLAND COORDINATION MEETING, ISPAHAN, 21 NOV. 2017



We engage in boardening the frontiers of knowledge

- We engage in **boardening the frontiers of knowledge** by offering **unique opportunities in education and research**, employing all necessary means in order to **develop the required skills** and **enhance the power to think analytically** and **argue persuasively**.
- This shall be resulting in **self-confidence** and **expertise** in our students and faculty members as a **team** in the **ever-growing era of information technology**.



SBU History and Campuses

- SBU established in 1959 (The ex- National University of Iran),

SBU Campuses:

1. SBU Main Campus
2. SBU Ekbatan Campus
3. SBU Abbaspour Campus
4. SBU Zirab Campus

Overall, SBU is 129.5 hectares and comprises of 57 major buildings.





Overview of SBU Faculties

1. Faculty of Architecture and Urban Planning
2. Faculty of Biology
3. Faculty of Chemistry
4. Faculty of Computer Engineering
5. Faculty of Earth Sciences
6. Faculty of Economics and Political Sciences
7. Faculty of Education and Psychology
8. Faculty of Electrical Engineering
9. Faculty of Law
10. Faculty of Literature and Humanities
11. Faculty of Management and Accounting
12. Faculty of Mathematics
13. Faculty of Mechanical and Energy Systems Engineering
14. Faculty of the Engineering of the New Technologies
15. Faculty of Nuclear Engineering
16. Faculty of Physical Education & Sport Sciences
17. Faculty of Physics
18. Faculty of Theology and Religion Studies
19. Faculty of Water and Environmental Engineering



Overview of SBU Research Institutes and Centers

1. Archives and Documents Center
2. Analysis and Identification of Chemical Matters Center
3. Brain and Cognitive Sciences Research Institute
4. Center for Remote Sensing and Geographical Information System
5. Center of Research and Development of Waqf
6. Cyberspace Research Institute
7. Environmental Sciences Research Institute
8. Family Research Institute
9. Fundamental Technology and Science Research Institute
10. Islamic Economy Research Center
11. Laser and Plasma Research Institute
12. Medicinal Plants and Drugs Research Institute
13. Protein Research Center
14. Regional Studies Research Institute
15. Quran Miracle Research Institute
16. Technology Units and Incubator
17. UNESCO Chair for Human Rights, Peace and Democracy
18. Unconventional Water Harvesting Center



Overview of SBU Centers of Excellence

1. Plasma
2. Photonic
3. Catalist
4. Architecture & Urban Design
5. Sustainable Development
6. Iran History

The screenshot shows the website of Shahrood University of Technology (SBU) with the URL www.msrt.ir/fa/Pages/MainMenuPages/Corp/Ghotb.aspx. The page features a header with the university's logo and navigation menu. Below the header, there is a search bar and a list of research centers of excellence. The list is as follows:

عنوان واحد	دانشگاه	زمینه اصلی فعالیت قطب	آدرس سایت
پلاسما و کاربردهای آن	شهید بهشتی	علوم پایه	http://www.sbu.ac.ir/adj/RESVP/Pages/D9/A7/D8/B7/D8/AA-/D9/AY/D8/AY/DB/AC-/D8/B9/D9/A8/D9/AS/DB/AC.aspx
توسعه پایدار محیط جغرافیایی	شهید بهشتی	علوم انسانی و هنر	http://www.sbu.ac.ir/adj/RESVP/Pages/D9/A7/D8/B7/D8/AA-/D9/AY/D8/AY/DB/AC-/D8/B9/D9/A8/D9/AS/DB/AC.aspx
خاتواده ایرانی و اسلامی	شهید بهشتی	علوم انسانی و هنر	-http://www.sbu.ac.ir/adj/RESVP/Pages/D9/A7/D8/B7/D8/AA-/D9/AY/D8/AY/DB/AC-/D8/B9/D9/A8/D9/AS/DB/AC.aspx
طراحی شهری در بافت های تاریخی با ارزش	شهید بهشتی	علوم انسانی و هنر	-http://www.sbu.ac.ir/adj/RESVP/Pages/D9/A7/D8/B7/D8/AA-/D9/AY/D8/AY/DB/AC-/D8/B9/D9/A8/D9/AS/DB/AC.aspx
فوتونیک	شهید بهشتی	علوم پایه	http://www.sbu.ac.ir/adj/RESVP/Pages/D9/A7/D8/B7/D8/AA-/D9/AY/D8/AY/DB/AC-/D8/B9/D9/A8/D9/AS/DB/AC.aspx
کاتالیست	شهید بهشتی	علوم پایه	http://www.sbu.ac.ir/adj/RESVP/Pages/D9/A7/D8/B7/D8/AA-/D9/AY/D8/AY/DB/AC-/D8/B9/D9/A8/D9/AS/DB/AC.aspx



Overview of Transdisciplinary Programs

1. NBIC (Nano Bio Information Science Cognitive Science)
2. WEA (Water Energy Environment)
3. Good Governance
4. Digital Humanities



Key SBU Initiatives and Innovative Online Services





Priority Domains for International Scientific Collaboration with Switzerland

According to the latest information, Swiss H.E. Institutions are particularly interested in the bilateral exploration of new avenues of collaboration in the following fields with the I.R. of IRAN:

- **Massive Open Online Courses (MOOCs),**
- **Governance,**
- **Digital Humanities, Sociotechnical Systems, Innovation**
- **Medecine,**
- **Sustainable Development / Energy / Nuclear Fusion,**
- **Space.**



SBU's past commitment to MOOCs and present commitment to OERs

MITOPENCOURSEWARE MASSACHUSETTS INSTITUTE OF TECHNOLOGY

Home Courses Donate About OCW Help Contact Us

Get Started with OCW

- VIEW ALL 2000 COURSES
- Most Visited Courses
- OCW Scholar
- Editor's Picks
- Audio/Video Courses
- Translated Courses
- New Courses

Find Courses

- Architecture and Planning
- Engineering
- Health Sciences and Technology
- Humanities, Arts, and Social Sciences
- Management
- Science
- Other Programs
- Cross-Disciplinary Topics
- Supplemental Resources
- View All Departments

Highlights for High School

- Other Resources
- Archived Courses
- MIT Curriculum Guide

Unlocking Knowledge, Empowering Minds.

Free lecture notes, exams, and videos from MIT. No registration required.

Through OCW, I am part of a movement to help make education free and available to the world.

Clinton Blackburn MIT student United States

FEATURED COURSE

SHAHID BEHESHTI UNIVERSITY OPENCOURSEWARE (SBU OCW)

- Shahid Beheshti University Launches OCW Translations
- Our History: SBU OCW, Translation & Production of OCW Courses

CELEBRATING 10 YEARS OF OCW

On April 4, 2011, MIT celebrated the 10th anniversary of OCW's announcement. Learn more about our first decade of open sharing.

OCW is grateful for the support of:

<http://mirror.mit-ocw.sbu.ac.ir/>

SHAHID BEHESHTI UNIVERSITY COURSEWARE

خروج تنظیمات صندوق ورودی دکتر کاوه بازرگان هرندي

راهبنا تقويم نمره ها تکليف ها درس ها

سرفصل (سیستم اطلاعات مدیریت پیشرفته (روش شناسی ایجاد سیستم

برش به امروز

سرفصل دروس

- MIS9495-L01 - General Introduction
- MIS9495-L02 - Course Textbook and Structure Presentation
- MIS9495-L03 - [Chapter 1] Introduction to Information Systems
 - 1.1: Why Should I Study Information Systems? 8
 - 1.2: Overview of Computer-Based Information Systems 14
 - 1.3: How Does IT Impact Organizations? 21
 - 1.4: Importance of Information Systems to Society 23
- MIS9495-L04 - [Chapter 2] Organizational Strategy, Competitive Advantage, and Information Systems
 - 2.1: Business Processes 39
 - 2.2: Business Process Improvement, Business Process Reengineering, and Business Process Management 44
 - 2.3: Business Pressures, Organizational Responses, and Information Technology Support 48
 - 2.4: Competitive Advantage and Strategic Information Systems 58
 - 2.5: Business-Information Technology Alignment 64
- MIS9495-L05 - [Chapter 3] Ethics and Privacy
 - 3.1: Ethical Issues 77
 - 3.2: Privacy 82

تکليف های درس ورن دار نشده اند

ویرایش شرح سرفصل

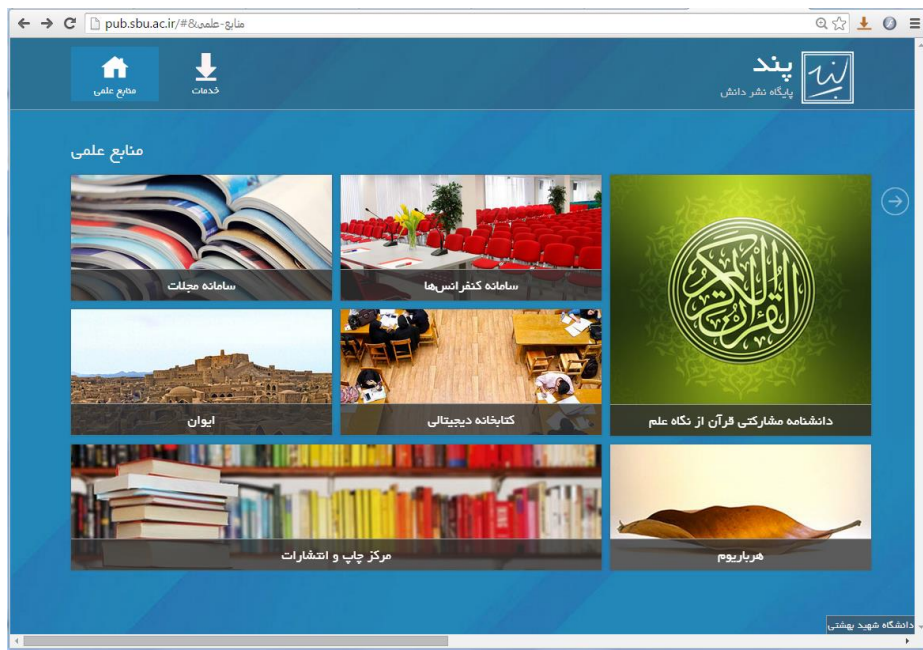
اکتبر 2015

27	28	29	30	1	2	3
4	5	6	7	8	9	10
11	12	13	14	15	16	17
18	19	20	21	22	23	24
25	26	27	28	29	30	31
1	2	3	4	5	6	7

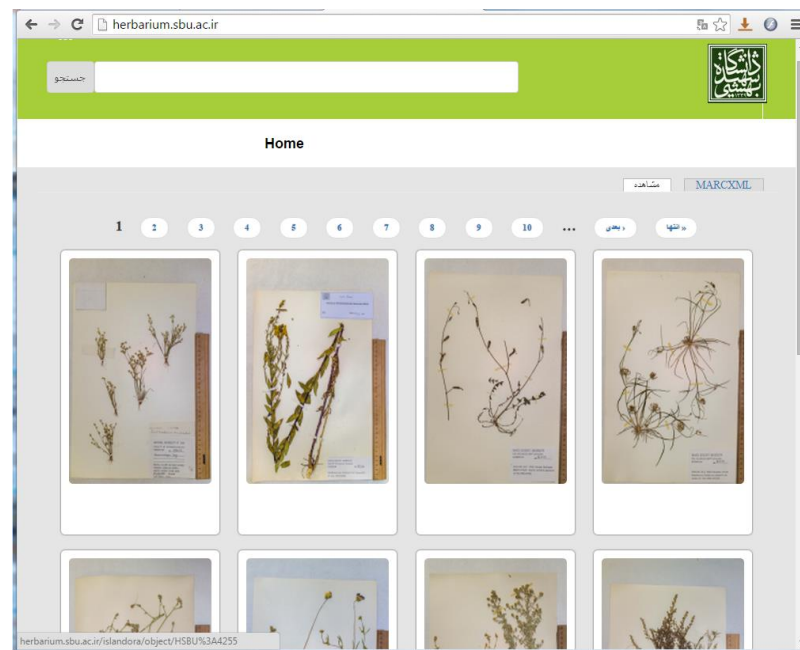
<https://courseware.sbu.ac.ir>



SBU's present commitment to Data Science



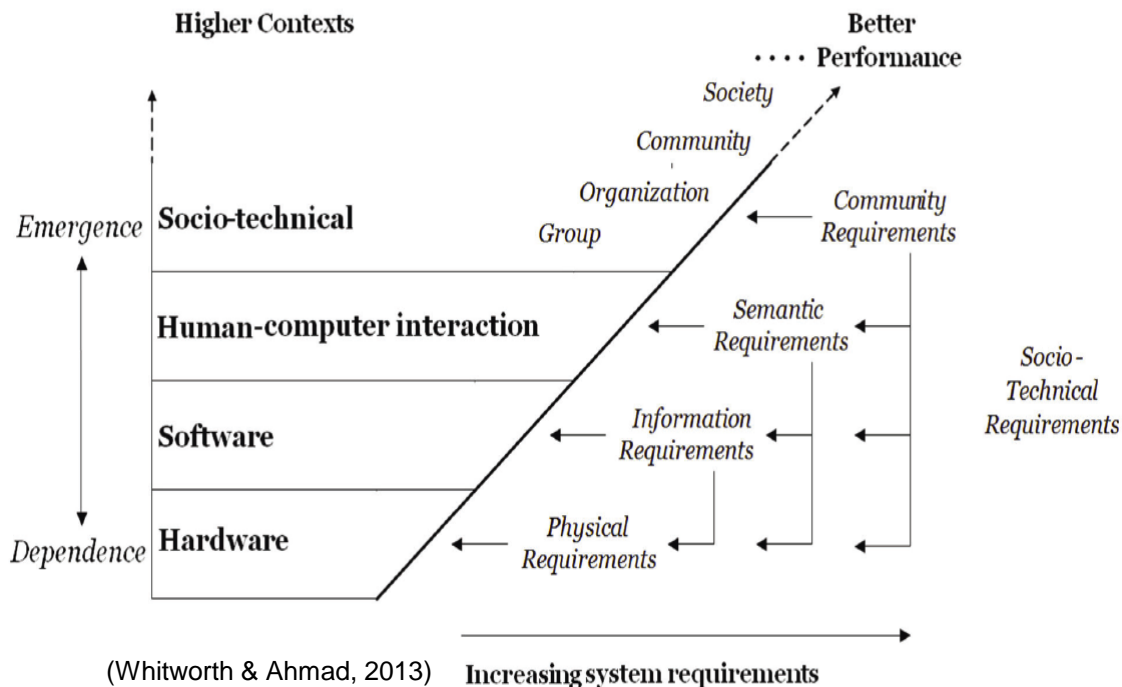
<http://pub.sbu.ac.ir>



<http://herbarium.sbu.ac.ir>



SBU's strong emerging and unique commitment to Digital Humanities



ACM SIGCHI IRAN Chapter (Special Interest Group on Computer-Human Interaction)

Charter Date: 17-Oct-14

Chair: Dr. Kaveh Bazargan

Department of Sociotechnical Systems
Management

Faculty of Management & Accounting

Shahid Beheshti University

Tehran, I.R. of Iran 1983969411

E-mail: k_bazargan@sbu.ac.ir

Phone: +98 21 29 90 52 17

Web: <http://www.sigchi.ir>



SBU's strong emerging and unique commitement to Digital Humanities

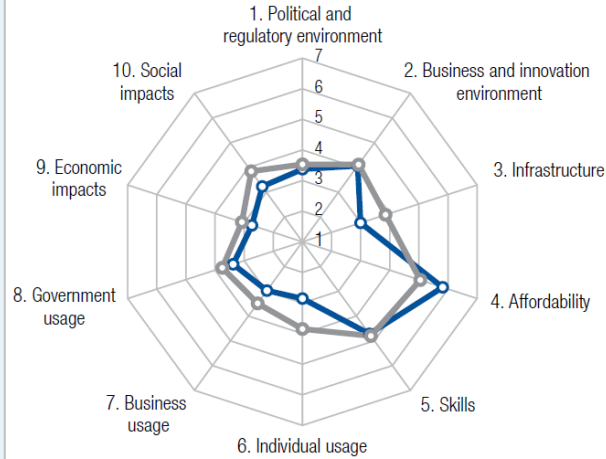
ICT services provided to students

General services provided to students

Services provided to students include:

- پست الکترونیکی (Email)
- مخاطبه و بانک های اطلاعاتی (Database & Communication)
- خدمات TSPV (TSPV Services)
- سیستم جامع دانشجویی (دانش، پژوهشی و فرهنگی) (Student System)
- دروس آنلاین (Online Courses)
- سیستم جامع دانشگاهی (University System)
- سایت مرکز کامپیوتر (Computer Center Website)
- VPN (VPN)
- وب سایت شخصی (Personal Website)
- Web Hosting (Web Hosting)
- فرصت مطالعاتی (Study Opportunities)

Usage challenges & gaps



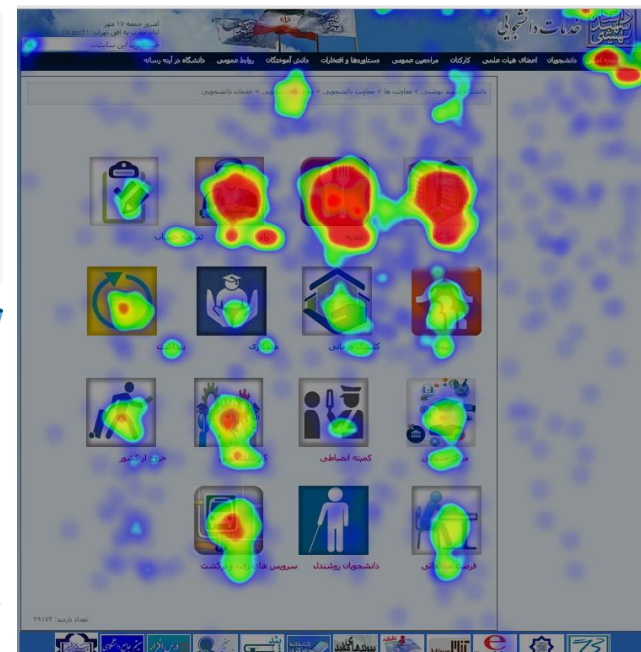
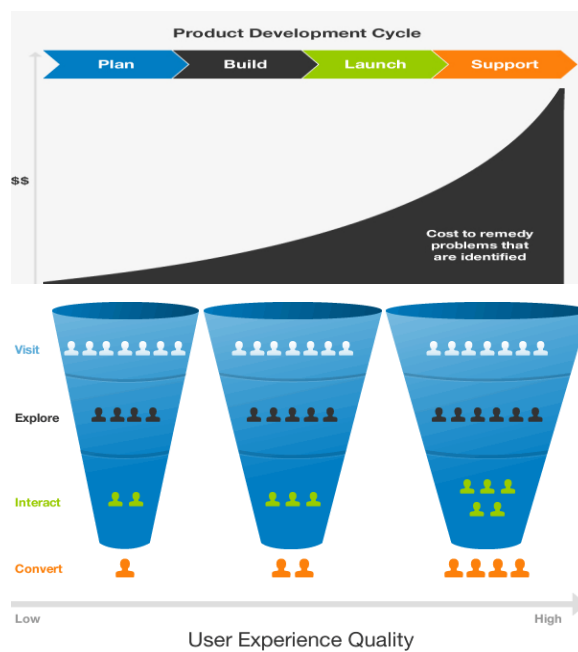
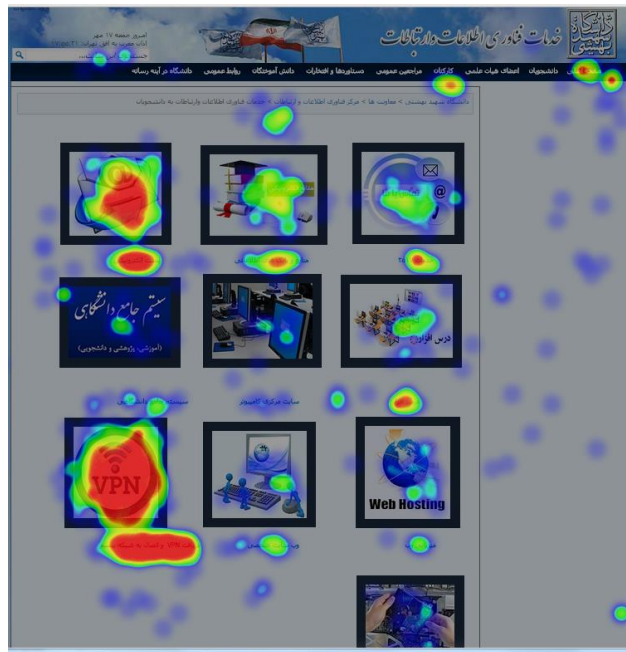
General services provided to students include:

- حسابداری (Accounting)
- واریز (Deposit)
- نقشه (Map)
- خودکارسازی (Automation)
- پودمانت (Module)
- مددکاری (Counseling)
- کمپلکس درمانی (Therapeutic Complex)
- بیمه (Insurance)
- خروج از کشور (Exit from country)
- کار دانشجویی (Student Work)
- کمیته انضباطی (Disciplinary Committee)
- مرکز خدماتی (Service Center)
- سرویس های رفت و برگشت (Transportation Services)
- دانشجویان رهنشانی (Student Housing)
- فرصت مطالعاتی (Study Opportunities)



SBU's strong emerging and unique commitement to Digital Humanities

Visualization of end-user real-time analytics & usage heatmaps (data range: last 28 days)



Educational Bodies

swissuniversities

Rectors' Conference of Swiss Higher Education Institutions

Rektorenkonferenz der schweizerischen Hochschulen

Conférence des recteurs des hautes écoles suisses

Effingerstrasse 15
P.O. Box
3001 Bern
T +41 (0)31 335 07 40
www.swissuniversities.ch

AAQ

Swiss Agency of Accreditation and Quality Assurance

Schweizerische Agentur für Akkreditierung und Qualitätssicherung

Agence suisse d'accréditation et d'assurance qualité

Effingerstrasse 15
P.O. Box
3001 Bern
T +41 (0)31 380 11 50
info@aaq.ch
www.aaq.ch

SBFI

State Secretariat for Education, Research and Innovation SERI

Staatssekretariat für Bildung, Forschung und Innovation SBFI

Secrétariat d'Etat à la formation, à la recherche et à l'innovation SEFRI

Einsteinstrasse 2
3003 Bern
T +41 (0)58 462 21 29
info@sbfi.admin.ch
www.sbfi.admin.ch

SHK

Swiss Conference of Higher Education Institutions

Schweizerische Hochschulkonferenz SHK

Conférence suisse des hautes écoles CSHE

Einsteinstrasse 2
3003 Bern
T +41 (0)58 462 88 11
shk-cshe@sbfi.admin.ch
www.shk.ch

SNF

Swiss National Science Foundation SNSF

Schweizerischer Nationalfonds SNF

Fonds national suisse FNS

Wildhainweg 3
P.O. Box
3001 Bern
T +41 (0)31 308 22 22
com@snf.ch
www.snf.ch

KTI

Commission for Technology and Innovation CTI

Kommission für Technologie und Innovation KTI

Commission pour la technologie et l'innovation CTI

Einsteinstrasse 2
3003 Bern
T +41 (0)58 462 24 40
info@kti.admin.ch
www.kti.admin.ch

SWIR

Swiss Science and Innovation Council SSIC

Schweizerischer Wissenschafts- und Innovationsrat SWIR

EDK

Swiss Conference of Cantonal Ministers of Education

Schweizerische Konferenz der kantonalen Erziehungsdirektoren EDK

Conférence suisse des directeurs cantonaux de l'instruction publique CDIP

Haus der Kantone
Speichergasse 6
P.O. Box
3001 Bern
T +41 (0)31 309 51 11
edk@edk.ch
www.edk.ch

movetia

Swiss agency for exchange and mobility

Schweizer Agentur für Austausch und Mobilität

Agence nationale suisse pour la promotion des échanges et de la mobilité

Dornacherstrasse 28A
P.O. Box
4501 Solothurn
T +41 (0)32 462 00 50
info@movetia.ch
www.movetia.ch

Universities

Doctoral/Research Universities



Universität Basel

Student Administration Office
Petersplatz 1
4001 Basel
T +41 (0)61 207 30 23
www.unibas.ch/studseksupport EN
www.unibas.ch

Faculties

- Theology
- Law
- Medicine
- Humanities and Social Sciences
- Science
- Business and Economics
- Psychology

a 12 852

b 24%

c 850
(students)

350
(doctoral students)

Universität Bern

Admissions Office
Hochschulstrasse 4
3012 Bern
T +41 (0)31 631 39 11
info@zib.unibe.ch
www.unibe.ch

Faculties

- Theology
- Law
- Business, Economics and Social Sciences
- Medicine
- Vetsuisse (Veterinary Medicine)
- Humanities
- Human Sciences
- Science

a 16 794

b 14%

c 805

Universität de Fribourg Universität Freiburg

Office for Admissions and
Registration
Rue de Rome 1
1700 Fribourg
T +41 (0)26 300 70 20
www.unifr.ch/admission/de/contact
www.unifr.ch

- #### Faculties
- Theology
 - Law
 - Economics and Social Sciences
 - Arts
 - Science

a 10 647

b 20%

d 655

c 805

Université de Genève

Service des admissions
Rue Général Dufour 24
1211 Genève 4
T +41 (0)22 379 77 39
admissions.unige.ch
www.unige.ch

Faculties

- Science
- Medicine
- Humanities
- Social Sciences
- Economics and Management
- Law
- Theology
- Psychology and Educational Sciences
- Translation and Interpreting

a 16 530

b 37%

c 500

Ecole polytechnique fédérale de Lausanne

Registrar's Office SAC
BP-1 233 (Bâtiment BP)
Station 16
1015 Lausanne
T +41 (0)21 693 43 45
student.services@epfl.ch
www.epfl.ch

Schools and Colleges

- Basic Sciences
- Engineering
- Architecture, Civil and Environmental Engineering
- Computer and Communication Sciences
- Life Sciences
- Management of Technology
- Humanities

a 10 124

b 51%

c 633

Université de Lausanne

Admissions Service
Unicentre
1015 Lausanne
T +41 (0)21 692 21 00
immat.bachelor@unil.ch
www.unil.ch

Faculties

- Theology and Sciences of Religions
- Law, Criminal Justice and Public Administration
- Arts
- Social and Political Sciences
- Business and Economics
- Geosciences and Environment
- Biology and Medicine

a 14 475

b 27%

c 580

a Number of students (2016)

b International students (2016)

c Tuition fees/semester for Swiss and international students in CHF (2017/2018)

d Tuition fees/semester for Swiss students in CHF (2017/2018)

e Tuition fees/semester for international students in CHF (2017/2018)

Universität Luzern	Faculties	a 2 842
Student Administration Office Frohburgstrasse 3 P.O. Box 4466 6002 Luzern T +41 (0)41 229 50 00 studiendienste@unilu.ch www.unilu.ch	- Theology - Humanities and Social Sciences - Law - Economics and Management	b 15% d 810 e 1 110

Università della Svizzera italiana	Faculties	a 2 862
Segreteria generale Via Lambertenghi 10A 6904 Lugano T +41 (0)58 666 46 11 info@usi.ch www.usi.ch	- Architecture - Biomedical Sciences - Communication Sciences - Economics - Informatics - Italian Studies	b 66% d 2 000 e 4 000

Université de Neuchâtel	Faculties	a 4 255
Registration Office Av. du 1er-Mars 26 2000 Neuchâtel T +41 (0)32 718 10 00 immatriculation@unine.ch www.unine.ch	- Humanities - Science - Law - Economics and Business	b 24% d 515 e 790

Universität St. Gallen	Schools	a 8 337
Admissions and Crediting Office Dufourstrasse 50 9000 St. Gallen T +41 (0)71 224 39 31 admissions@unisg.ch www.unisg.ch	- Management - Economics and Political Science - Law - Finance - Humanities and Social Sciences	b 32.5% d 1 226 B 1 426 M e 3 126 B 3 326 M

Eidgenössische Technische Hochschule Zürich	Departments	a 19 815
Registrar's Office HG F 21.3-4 Rämistrasse 101 8092 Zürich T (Bachelor) +41 (0)44 633 82 00 T (Master) +41 (0)44 632 81 00 zulassungsstelle@ethz.ch and master@ethz.ch www.ethz.ch	- Architecture - Civil, Environmental and Geomatic Engineering - Biosystems Science and Engineering - Computer Science - Information Technology and Electrical Engineering - Mechanical and Process Engineering - Materials - Biology - Chemistry and Applied Biosciences - Mathematics - Physics - Earth Sciences - Environmental Systems Science - Health Sciences and Technology - Management, Technology and Economics - Humanities, Social and Political Sciences	b 38% c 644

Universität Zürich	Faculties	a 25 542
Student Services Admissions Office Rämistrasse 71 8006 Zürich T +41 (0)44 634 22 36 www.students.uzh.ch/en/ administration/email.html www.uzh.ch	- Theology - Law - Business, Economics and Informatics - Medicine - Vetsuisse (Veterinary Medicine) - Arts and Social Sciences - Science	b 19.5% d 769 e 1 269 (B69 for Master's programmes)

Doctoral/Research Universities	UniBE	UNIBAS	ETH Zürich	UniFR	UNILU
Speaking area of Switzerland*	G	G	G	G/F	G

Theology, Religious Studies

Science of Religion	B/M/SM	B/M		B/M	B/M
Theology	B/M	B/M		B/M	B/M

Law, Economics, Business Administration/Management

Business Administration	B/M/SM	B/M/SM	M	B/M	
Business Informatics				B/M	
Economics	B/M/SM	B/M/SM		B/M	B/M
Finance			SM	M	
Forensic Sciences					
Law	B/M	B/M		B/M	B/M
Professional Officer (of the Swiss Armed Forces)			B		

Medicine, Nursing, Therapie

Applied Biosciences	M/SM		B/M/SM	B	
Dentistry	B/M	B/M			
Health Science		M	B/M		M
Human Medicine (incl. Chiropractic UZH)	B/M	B/M	B	B/M	M
Nursing Sciences		M			
Pharmaceutical Sciences	2	B/M	B/M/SM		
Veterinary Medicine	B/M				

Human Movement and Sports Sciences

Human Movement and Sports Sciences/Sport	B/M	B/M	B/M	B/M	
--	-----	-----	-----	-----	--

HSG	UZH	USI	EPFL	UNIGE	UNIL	UniNE	UAS	UTE
G	G	I	F	F	F	F		

	B/M			B/M	B/M			
	B/M/SM			B/M	B/M			

B/M/SM	B/M	M	SM	B/M/SM	B/M	B/M	B/M	
	B/M	M		B/M	B/M	B/M	B/M	
B/M/SM	B/M	B/M		B/M/SM	B/M	B/M		
SM	B/M/SM	M		M/SM	B/M	B/M	B/M	
					B/M			
B/M	B/M/SM			B/M/SM	B/M	B/M	B/M	

			M					
	B/M			B/M				
				M				
	B/M/SM	B		B/M/SM	B/M	1		
					SM		B/M	
				B/M	1	1		
	B/M							

					B/M	B/M	B/M	B/M
--	--	--	--	--	-----	-----	-----	-----

Doctoral/Research Universities

	UniBE	UNIBAS	ETH Zürich	UniFR	UNILU
Speaking area of Switzerland*	G	G	G	G/F	G

	HSG	UZH	USI	EPFL	UNIGE	UNIL	UniNE	UAS	UTE
	G	G	I	F	F	F	F		

Social Sciences

Education	B/M	M		B/M/SM	
Geography	B/M	B/M		B/M	
Political Science	B/M/SM	B/M	SM		B/M
Psychology	B/M	B/M		B/M	
Social and Cultural Anthropology	B/M	B/M		B/M	B/M
Social Work and Social Policy				B/M/SM	
Sociology	B/M	B/M		B/M/SM	B/M
Special Education				B/M	

	B/M			B/M	M	B/M	M	B/M/T
	B/M/SM			B/M	B/M	B/M		
B/SM	B/M	M		B/M/SM	B/M			
	B/M	M		B/M	B/M	M	B/M	
	B/M			SM	B/M	B/M/SM		
						M	B/M	
	B/M			B/M/SM	B/M	B/M		
	M			M/SM		B/M/SM	M	M

Linguistics and Literary Studies, Communication

African Studies		M			
Ancient Near Eastern Studies	B	M			
Central Asian Studies	B/M				
Classical Philology	B/M	B/M		B/M	
Communication and Media Studies	B	B/M		B/M	B/M
Comparative Literature	M	M		M	
East Asian Studies					
English Languages and Literatures	B/M	B/M		B/M	
French Language and Literature	B/M	B/M		B/M	
German Language and Literature	B/M	B/M		B/M	
Ibero-Romance Languages and Literatures	B/M	B/M		B/M	
Interpretation/Translation					
Islamic and Middle Eastern Studies	B/M	B/M			
Italian Language and Literature	B/M	B/M		B/M	

				SM				
				B				
	B/M			B/M	B/M	B/M		
	B/M	B/M		SM		B/SM	B	
	B/M			B/M		M		
	B/M			B/M/SM				
	B/M			B/M	B/M	B/M		
	B/M			B/M	B/M	B/M		
	B/M			B/M	B/M	B/M		
	B/M			B/M	B/M	B/M		
				B/M/SM			B	
	B/M			B/M/SM				
	B/M	B/M		B/M	B/M			

Doctoral/Research Universities	UniBE	UNIBAS	ETH Zürich	UniFR	UNILU
Speaking area of Switzerland*	G	G	G	G/F	G

HSG	UZH	USI	EPFL	UNIGE	UNIL	UniNE	UAS	UTE
G	G	I	F	F	F	F		

Linguistics and Literary Studies, Communication

Linguistics	B/M	M		M	
Modern Greek Language and Literature					
Nordic Languages and Literatures		B/M			
Rhaeto-Romanic Language and Literature				B	
Slavonic Languages and Literatures	B/M	B/M		B/M	
South Asian Studies/Indian Studies					

	B/M/SM			B/M	B/M	B/M	M	
				B/M				
	B/M							
	B/M			B/M/SM	B/M			
	B/M				B/M			

Historical and Cultural Sciences

African Studies		M			
Ancient Near Eastern Studies	B	M			
Archeology	B/M	M		M	
Art History	B/M	B/M		B/M	
Central Asian Studies	B/M				
East Asian Studies					
Egyptology		M			
History	B/M	B/M		B/M	B/M
History and Philosophy of Science	B/M		SM		M
Islamic and Middle Eastern Studies	B/M	B/M			
Musicology	B/M	B/M		B/M	
Philosophy	B/M	B/M		B/M	B/M
South Asian Studies/Indian Studies					
Theatre, Dance and Film Studies	B/M				

				SM				
				B				
	B/M			B/M	B/M	B/M		
	B/M			B/M	B/M	B/M		
	B/M			B/M/SM				
				B/M				
	B/M			B/M	B/M	B/M		
	B/M			B/M/SM				
	B/M			B/M				
	B/M			B/M	B/M	B/M		
	B/M				B/M			
	B/M/SM				B/M		B/M	

Doctoral/Research Universities	UniBE	UNIBAS	ETH Zürich	Unifr	UNILU
Speaking area of Switzerland*	G	G	G	G/F	G

HSG	UZH	USI	EPFL	UNIGE	UNIL	UniNE	UAS	UTE
G	G	I	F	F	F	F		

Mathematics, Computer Science

Business Informatics				B/M	
Communication Systems					
Computational Science and Engineering		B	B/M		
Computer Science	B/M	B/M	B/M/SM	B/M	
Mathematics	B/M	B/M	B/M/SM	B/M	

	B/M	M		B/M	B/M	M	B/M	
			B/M	B				
	SM	M	SM					
	B/M/SM	B/M	B/M	B/M	B/M	M	B/M	
	B/M		B/M	B/M		B/M		

Sciences and Earth Sciences

Agricultural Science			B/M		
Applied Biosciences	M/SM		B/M/SM	B	
Archeology	B/M	B/M		M	
Biochemistry	B		B/M	B/M	
Biology	B/M	B/M/SM	B/M/SM	B/M/SM	
Chemical Engineering			B/M		
Chemistry	B/M	B/M	B/M	B/M	
Earth Sciences	B/M	B/M	B/M/SM	B/M	
Environmental Sciences	B/SM	SM	B/M	B	
Food Science			B/M		
Forensic Sciences					
Geography	B/M	B/M		B/M	
Life Sciences and Technologies	M/SM		B/M/SM		
Materials Science and Engineering			B/M		
Physics	B/M	B/M	B/M/SM	B/M	

							B/M	
			M					
	B/M			B/M	B/M	B/M		
	B/M			B/M				
	B/M/SM			B/M	B/M	B/M		
			B/M					
	B/M/SM		B/M	B/M			B	
	B/M			B/M	B/M	M		
	SM			M	B/M	B		
					B/M			
	B/M/SM			B/M	B/M	B/M		
	SM		B/M				B/M	
			B/M					
	B/M/SM		B/M/SM	B/M				

Doctoral/Research Universities	UniBE	UNIBAS	ETH Zürich	UniFR	UNILU
Speaking area of Switzerland*	G	G	G	G/F	G

HSG	UZH	USI	EPFL	UNIGE	UNIL	UniNE	UAS	UTE
G	G	I	F	F	F	F		

Engineering

Applied Biosciences	M/SM		B/M/SM	B	
Architecture			B/M/SM		
Chemical Engineering			B/M		
Civil Engineering			B/M		
Computational Science and Engineering		B	B/M		
Electrical Engineering			B/M		
Environmental and Geomatics Engineering			B/M		
Food Science			B/M		
Life Sciences and Technologies	M/SM		B/M/SM		
Materials Science and Engineering			B/M		
Mechanical Engineering			B/M/SM		
Micro Engineering			SM		

			M					
		B/M	B/M				B/M	
			B/M					
			B/M				B/M	
		M	SM					
			B/M				B/M	
			B/M				B/M	
			B/M				B/M	
			B/M				B	

Teaching, Educational Science

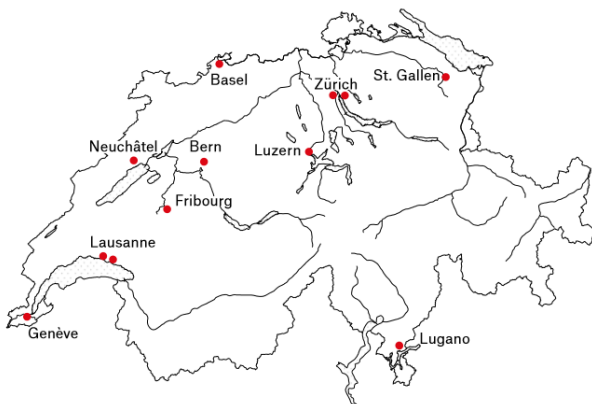
Education	B/M	M		B/M/SM	
Primary Education/Secondary I Education/ Secondary II Education			SM	B/M/T	M
Special Education				B/M	

	B/M			B/M	M	B/M	M	
				B/M/SM			B/M	B/M/T
	M			M/SM		B/M/SM	M	M



EPFL

Ecole Polytechnique Federale de Lausanne



Ecole polytechnique fédérale de Lausanne

Registrar's Office SAC
BP-1 233 (Bâtiment BP)
Station 16
1015 Lausanne
T +41 (0)21 693 43 45
student.services@epfl.ch
www.epfl.ch

Schools and Colleges

- Basic Sciences
- Engineering
- Architecture, Civil and Environmental Engineering
- Computer and Communication Sciences
- Life Sciences
- Management of Technology
- Humanities

a 10124

b 51%

c 633

a Number of students (2016)

b International students (2016)

c Tuition fees/semester for Swiss and international students in CHF (2017/2018)

d Tuition fees/semester for Swiss students in CHF (2017/2018)

e Tuition fees/semester for international students in CHF (2017/2018)



SBU's specific interest in EPFL's experience : transdisciplinary initiatives and lifecycles

vpiv.epfl.ch/centers

VICE PRESIDENCY FOR INNOVATION AND TECHNOLOGY TRANSFER VPIV

Technology Transfer | Collaboration with industry | Entrepreneurship support | **Transdisciplinary initiatives** | Events/News | Contacts

Share:

Transdisciplinary initiatives

- Transportation Center
- MetaMedia Center
- EPFL Ecal-Lab
- Cloud Computing - EcoCloud
- Social Media Lab
- Swiss Space Center
- Energy Center
- Human Brain Project
- Discovery Projects

OTHER EPFL RESEARCH INITIATIVES

- Integrated Systems Centre
- Nano-Tera
- Center on Risk Analysis and Risk Governance
- Center for Research in Plasma Physics
- Center for MicroNanoTechnology
- National Competence Center for Biomedical Imaging
- Competence Center for Environment and Sustainability
- Competence Center Energy and Mobility
- Competence Center for Materials Science and Technology
- European Center of Atomic and Molecular Computations
- Bernoulli Center
- Biomedical Imaging Research Center

The Transdisciplinary Initiatives of EPFL enable the exploration of emerging fields. They include programmes, centers and transdisciplinary research, that help bridging established academic boundaries. The proposals process is managed by VPIV in coordination with the VPAA. The final decision to support a strategic initiative is taken by EPFL direction. Should you need further information, do not hesitate to contact the VPIV.

The focuses efforts in the following technology areas:

- Cloud Computing
- Design
- Energy
- Space
- Multimedia
- Neuro Sciences
- Social Networks
- Transportation

Discovery Projects

https://www.nextthink.com

nextthink

WHAT'S NEW?

PRODUCT | SOLUTIONS | CUSTOMERS | PARTNERS | ABOUT US | RESOURCES

CONTACT US | SUPPORT

Smart Insight. Fast Action. End-User IT Analytics

SECURITY
Find threats and exposure at the speed of data

SEE IT IN ACTION

OPERATIONS
Measure user experience and deliver first class IT services

SEE IT IN ACTION

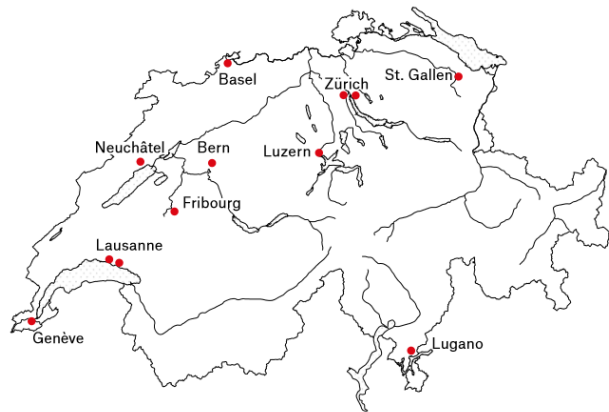
PROJECTS
Reduce complexity and save costs with real-time data

SEE IT IN ACTION

Only have 80 seconds? Check out our [introduction video](#)



Universite de Geneve (University of Geneva) UNIGE



Université de Genève

Service des admissions
Rue Général Dufour 24
1211 Genève 4
T +41 (0)22 379 77 39
admissions.unige.ch
www.unige.ch

Faculties

- Science
- Medicine
- Humanities
- Social Sciences
- Economics and Management
- Law
- Theology
- Psychology and Educational Sciences
- Translation and Interpreting

a 16 530

b 37%

c 500

a Number of students (2016)

b International students (2016)

c Tuition fees/semester for Swiss and international students in CHF (2017/2018)

d Tuition fees/semester for Swiss students in CHF (2017/2018)

e Tuition fees/semester for international students in CHF (2017/2018)



SBU's specific interest in University of Geneva (UNIGE)'s experience : **2nd most International University in the world**



The University of Geneva is...

among the
top 100



on 20'000
universities

2nd most
International

University in
the world



Times Higher Education

a Community

16'900
students



& 6000
Employees

10'200 CONTINUING
students in EDUCATION

Alumni
7000



12 MOOC'S
190'000 registered learners



SBU's specific interest in University of Geneva (UNIGE)'s experience : **2nd most International University in the world**

A Campus in the heart of an International City





SBU's specific interest in University of Geneva (UNIGE)'s experience : **2nd most International University in the world**



GENEVA

A center of scientific excellence



University of Applied Sciences

5'000
students



University of Geneva

46% research and teaching staff from abroad

Campus de la Paix



Graduate Institute of International and Development Studies

CERN **11'000**
scientists

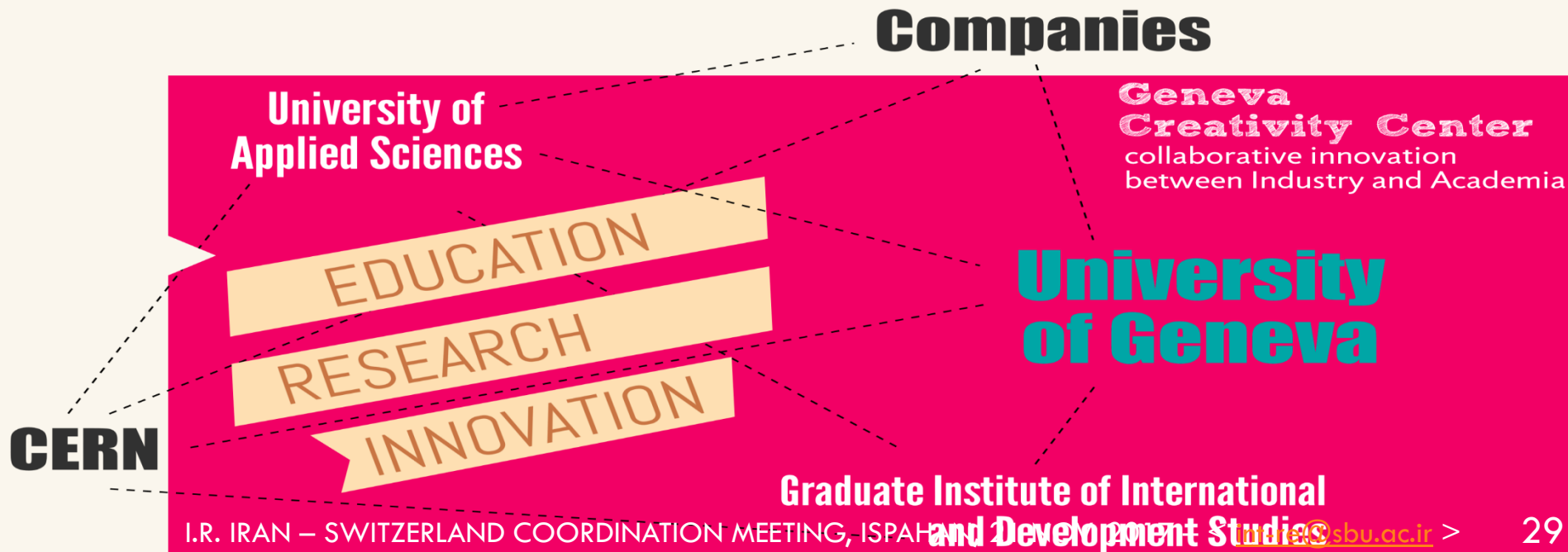




SBU's specific interest in University of Geneva (UNIGE)'s experience : **2nd most International University in the world**



A Collaborative Network





Thank you for your attention. Any questions?

Dr. A.S. Shirani
int-re@sbu.ac.ir

Dr. Kaveh Bazargan
k_bazargan@sbu.ac.ir